

Dialer Restriction Patterns

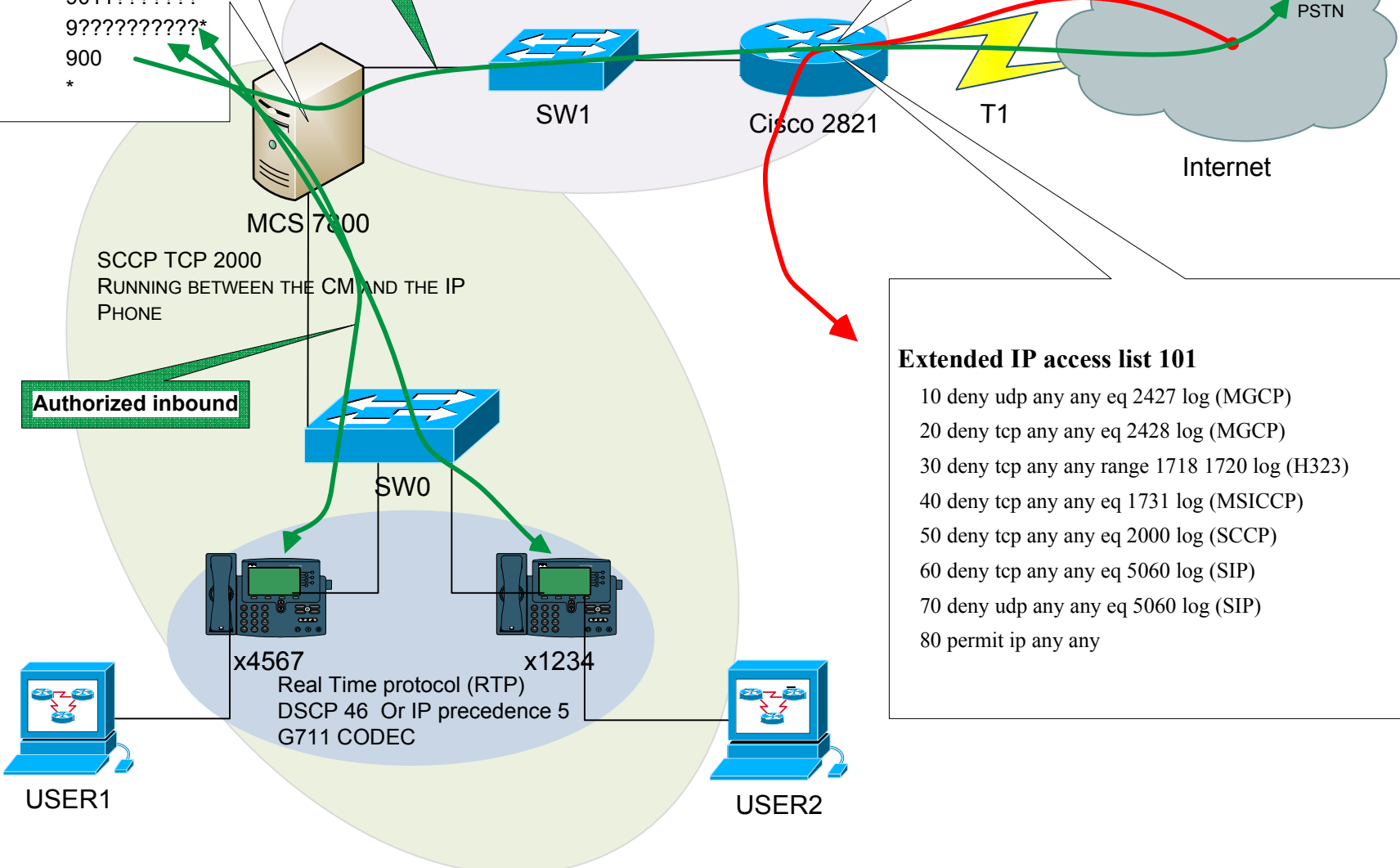
Order	Blocked	Pattern
0		????
1	x	91????????*
2	x	9011????????*
3	x	9????????????*
4	x	900
5		*

Authorized Outbound Call

MGCP UDP 2427 & TCP 2428 OR
H323 SIGNALING UDP 1718, 1719
TCP 1720

dial-peers configured
dial-peer voice 11 pots
destination-pattern 9[2-9].....
port 0/2/0:23
forward-digits 7
Compressed to G729 CODEC

Unauthorized Inbound Voice PORT Spamming



Authorized inbound

SCCP TCP 2000
RUNNING BETWEEN THE CM AND THE IP
PHONE

x4567
Real Time protocol (RTP)
DSCP 46 Or IP precedence 5
G711 CODEC

x1234

USER1

USER2

Extended IP access list 101

- 10 deny udp any any eq 2427 log (MGCP)
- 20 deny tcp any any eq 2428 log (MGCP)
- 30 deny tcp any any range 1718 1720 log (H323)
- 40 deny tcp any any eq 1731 log (MSICCP)
- 50 deny tcp any any eq 2000 log (SCCP)
- 60 deny tcp any any eq 5060 log (SIP)
- 70 deny udp any any eq 5060 log (SIP)
- 80 permit ip any any